

REFRACTIVE LENS EXCHANGE



AUCKLANDEYE
See your life CHANGE

www.aucklandeye.co.nz

REFRACTIVE LENS EXCHANGE

Refractive lens exchange, also called lens replacement surgery or clear lens extraction, may be a better option than SMILE, LASIK, PRK or ICL refractive surgery for people with presbyopia and high hyperopia (farsightedness).

Refractive lens exchange (RLE) replaces your eye's clear natural lens with an artificial intraocular lens (IOL) to correct your focusing error and achieve sharper focus, reducing your need for reading glasses or bifocals/graduated lenses.

The procedure for refractive lens exchange is virtually identical to cataract surgery. The difference is that in RLE, the lens being replaced is clear, rather than a cloudy lens due to a cataract.

There are different types of IOL's available to replace your natural lens, depending on your vision needs and the health of your eyes.

TYPES OF INTRAOCULAR LENS

Monofocal fixed-focus IOLs

Monofocal lenses provide clear vision at distance, intermediate or near ranges — but not all three at once. Toric IOLs to correct astigmatism also are classified as monofocal IOLs.

Multifocal IOLs

A multifocal lens provides clear vision at multiple distances.

Accommodating IOLs

An accommodating IOL is a type of monofocal lens that enables focus at multiple distances by shifting its position in the eye.

EDOF (Extended Depth Of Focus) IOL

These IOL's spread focused light over a greater distance allowing patients to have a more continuous range of vision without the possibility of "gaps" in the vision. They are also less likely to induce night vision haloes or starburst effects than Multifocal IOL's.

With intraocular lenses, there is no "one size fits all," and your eye surgeon will recommend an IOL that is most suitable for your individual needs.

THE PROCEDURE

Lens replacement surgery usually takes about 20 minutes and is performed on an outpatient basis. Each eye is done separately, usually about a week apart.

Numbing anaesthetic drops are used during the procedure, so typically there is no discomfort, and most people report immediate vision improvement after surgery.

AUCKLAND EYE

SEE YOUR LIFE CHANGE

Initial recovery from refractive lens exchange — when you can resume normal everyday activities — usually takes about a week. Final outcomes of refractive lens exchange can take up to several weeks, and you may notice vision disturbances such as blurry vision, halos and glare, or a “scratchy” sensation as your eyes heal. You should be able to return to work and resume driving within a week of surgery, dependent on your eye surgeon’s instructions.

The artificial intraocular lens is a permanent replacement for your natural lens and is designed to last the rest of your life. And, because IOL’s are not affected by age-related changes, there is minimal risk of regression (loss of corrective effect or deterioration of vision) over time.



Auckland Eye is New Zealand’s centre of excellence for eye care, with a totally tailored approach that provides the best possible outcome for patients. Our team of leading experts are highly trained in their specialist fields, providing assessment and management of a comprehensive range of eye conditions.

Combined with Oasis Surgical – Auckland’s premier eye surgery facility – we offer superior treatment and world-class care in a relaxed, friendly environment. Both centres are independently accredited against EQUIP 5 standards for excellence in patient care and services.

Auckland Eye is centrally located in Remuera, with easy motorway access, plentiful off-street parking and wheelchair access. There are additional dedicated consulting facilities in Takapuna and New Lynn, as well as appointments available at a wide range of other locations across the Auckland region.

Auckland Eye is an affiliated provider to Southern Cross Health Society.

For more information on Refractive Lens Exchange, please contact our friendly specialist team.

AUCKLAND EYE SURGEONS



Dr Stephen Best
BSc, MBChB, FRANZCO
Remuera, Botany



Dr Stuart Carroll
MBChB, FRANZCO
Remuera, Silverdale, Takapuna



Dr Dean Corbett
BSc, MBChB, FRANZCO
Remuera, Takapuna, Orewa



Dr Archie McGeorge
MBChB, PhD, FRANZCO
Remuera, Takapuna, Orewa



Dr Justin Mora
MBChB, FRANZCO
Remuera, Papakura, Pukekohe, New Lynn



Dr Yvonne Ng
MBChB, FRANZCO
Remuera, Botany, Henderson, Takapuna



Dr Sue Ormonde
MBChB, MD, FRCOphth, FRANZCO
Remuera, Takapuna, Westgate

AUCKLAND EYE SURGEONS



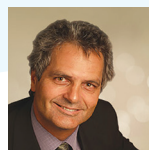
Dr David Pendergrast
MBChB, FRANZCO
Remuera, Papakura, Pukekohe



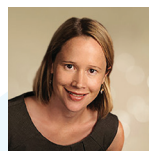
Dr Alison Pereira
MBChB, FRCOphth, FRANZCO
Remuera, Takapuna



Assoc. Prof. Philip Polkinghorne
MBChB, MD, FRANZCO, FRCOphth
Remuera, Papatoetoe, Whangarei



Dr Paul Rosser
MBChB, FRANZCO
Remuera, Albany, New Lynn



Dr Jo Sims
MBChB, FRANZCO
Remuera, New Lynn, Papatoetoe



Dr Sarah Welch
BSc, BMedSci, MBChB, FRANZCO
Remuera, New Lynn, Pukekohe



8 St Marks Road, Remuera
phone (64) 09 529 2480
fax (64) 09 529 2481
email admin@aucklandeye.co.nz
web www.aucklandeye.co.nz

